



## ACK Whitepapers

Implementation of a SCSI driver

Aagon Consulting GmbH  
Coesterweg 45  
59494 Soest  
Fon: +49 (0)2921 - 789 200  
Fax: +49 (0)2921 - 789 244  
[www.aagon.com](http://www.aagon.com)  
[info@aagon.com](mailto:info@aagon.com)

## Content

<b>CONTENT .....</b>	<b>2</b>
<b>1. IMPLEMENTATION OF A SCSI DRIVER .....</b>	<b>3</b>
1.1 SCSI.....	3
1.2 SCSI driver in ACK.....	3
1.3 Implementing SCSI drivers.....	3
1.3.1 Insert a new manufacturer .....	4
1.3.2 Insert a device driver .....	4
1.3.3 Adapter specifications.....	4
1.3.3.1 General .....	4
1.3.3.2 OS.....	5
1.4. Finish the driver installation .....	5

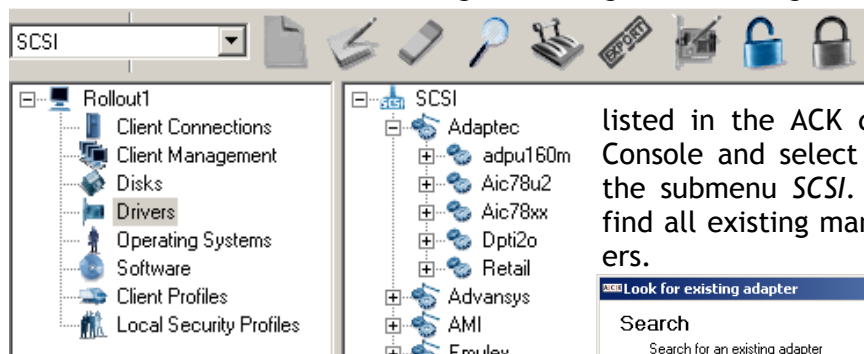
# 1. Implementation of a SCSI driver

## 1.1 SCSI

A SCSI (Small computer system interface) adapter is a parallel interface, which was developed since 1981 particularly for PC peripheral devices such as hard disks and tape drives. Over the SCSI bus, data transfer rates between 3 MB/s up to 40 MB/s are possible depending on SCSI version.

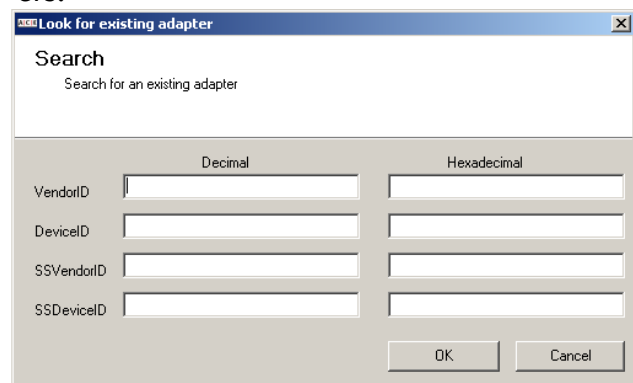
## 1.2 SCSI driver in ACK

Sollte in dem auszurollenden Rechner eine Festplatte an einem SCSI Adapter angeschlossen sein, ist es erforderlich, dass dieser den richtigen Treiber erhält, um eine Verbindung zum Bootgerät zu ermöglichen.



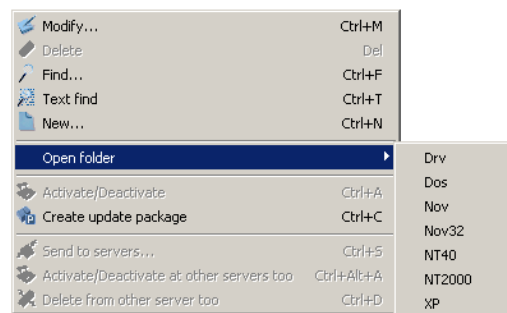
First check whether your SCSI driver is listed in the ACK data base. Open the ACK Console and select in the ACK menu *Drivers* the submenu *SCSI*. In the submenu *SCSI* you find all existing manufacturers and their drivers.

If you want to look for a certain driver name, you have also the possibility to look for special keywords with the right mouse button and *Text find* and/or *Strg+T*. With right-click and *Find..* you can also look for the decimal and hexadecimal numbers of *VendorID*, *DeviceID*, *SSVendorID* or *SSDeviceID* of your driver.



## 1.3 Implementing SCSI drivers

If your driver does not exist in the ACK driver data base, you have the possibility to integrate new manufacturers including the pertinent drivers. First make sure that the correct SCSI driver with the appropriate \*.sys and \*.ini files are available, by scanning the driver CD or disk. For the implementation of this driver proceed as follows: Click with the right mouse button in the






context menu, move to *Open folder* and select either *Drv* (Driver) to access the operating systems overview or decide at once for the related OS. An explorer window opens, in which you can create the folder for your driver, in order to copy the sys and ini files into.

the sys and ini files into.


Now select the submenu *SCSI* from the menu *Drivers* in the menu of the ACK Console. All available manufacturers with their drivers appear. Subsequently open the *Replications Package* with the blue padlock in the tool bar and release the drivers for treatment.





### 1.3.1 Insert a new manufacturer


If your driver manufacturer  is not listed in the menu *SCSI*, right click on  *SCSI SCSI* and click on *New...* Enter the name of the manufacturer of your driver in the following dialogue box. This way you create a further subdirectory in your driver tree  *manufacturer's name*.

### 1.3.2 Insert a device driver

If the driver manufacturer  should already exist, continue here.

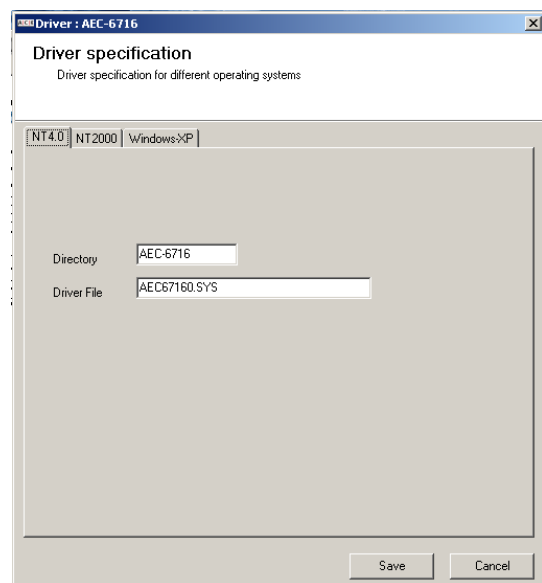
In order to adjust the particular device driver, right-click on the driver manufacturer , afterwards on *New...* and define the **driver specifications** for the respective operating system. To these specifications belong the .sys file and the superior directory. So the folder  *Driver name* is generated.

### 1.3.3 Adapter spezifikationen

Now add with a right click on *Driver name* and *New...* the  *Adapter Specifications*.

#### 1.3.3.1 General

The blue colored informations in the *General* tab sheet are to be mandatorily entered.



Driver : AEC-6716

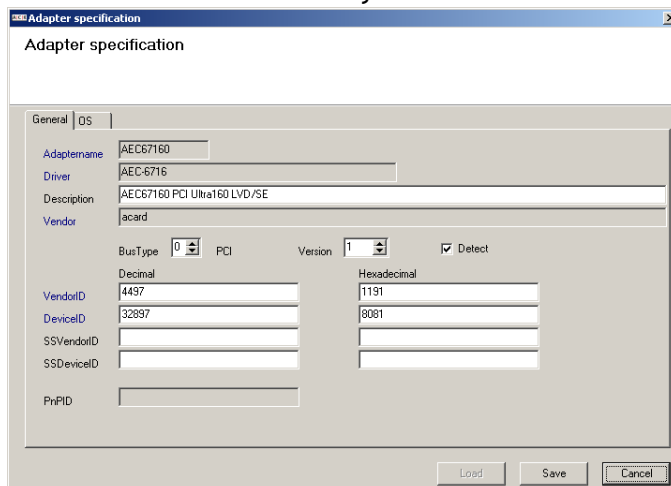
Driver specification  
Driver specification for different operating systems

NT4.0 | NT2000 | WindowsXP

Directory: AEC-6716

Driver File: AEC67160.SYS

Save Cancel



Adapter specification

General | OS

Adaptername: AEC67160

Driver: AEC-6716

Description: AEC67160 PCI Ultra160 LVD/SE

Vendor: acard

BusType: 0 PCI Version: 1 Detect: ☒

VendorID: 4497 (Decimal) 1131 (Hexadecimal)

DeviceID: 32897 (Decimal) 8081 (Hexadecimal)

SSVendorID:

SSDeviceID:

PrnPID:

Load Save Cancel

To these *General* informations belong the adapter name, as it is shown to the ACK user, the driver specification of the .sys file, the adapter description and the vendor.

Select between the numbers 0 to 3 under *BusType*, whether you use a *PCI*, *ISApnp*, *ISA* or a *PCMCIA* adapter. *Version* indicates which driver is pertinent, this number can be adjusted manually. *Detect* should be activated, if the adapter can be recognized automatically by the system. Further the *Vendor ID* and the *Device ID* have to be keyed in. This data you will most

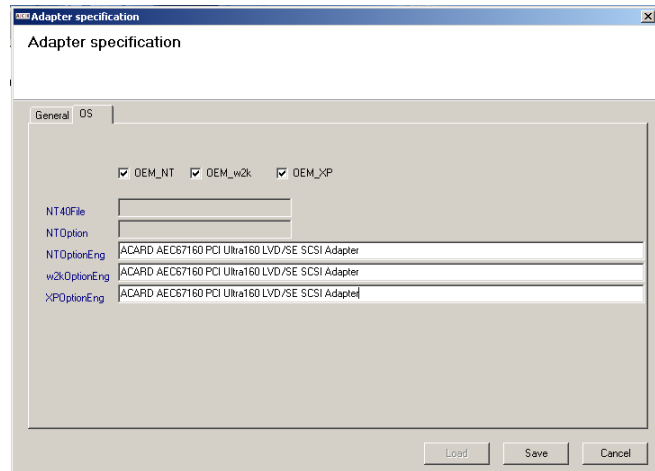
probably find as hexadecimal numbers, if you open the driver (preferably Windows 9x driver) in the editor. In an INF File such an entry can look as follows:

```
\VEN_1039&DEV_0900&SUBSYS_09001039
      [VendorID]      [DeviceID]      [SSDeviceID][SSVendorID]
```

## 1.3.3.2 OS

More complicated it is, to get the description `__OptionEng` for the OS tab. This information you will find in the respective `TXTSETUP.OEM`, however the description is left to the manufacturer, so that there is no ready-made solution for the `__OptionEng` entry.

**These inputs must be done in every case either for Windows NT as well as for Windows 2000 und XP!**



## 1.4. Finish the driver installation



After you have successfully implemented the driver, the driver resp. its changes in the data base must be written into an ini file. Click for this in the menu bar on *Export to Ini files* - the files become automatically transferred. Finally store the data concerning *Writes detect information* so that ACK can recognize the new applied driver. Finish the driver's installation by clicking the closed padlock.

