

TargetProcess:Planning v.1.0.1 Installation Guide

PREREQUISITES	1
INSTALLATION	1
<i>Installing MSDE.....</i>	<i>1</i>
<i>Unpacking.....</i>	<i>2</i>
<i>Application's web site creation</i>	<i>2</i>
<i>Database creation</i>	<i>3</i>
<i>Running.....</i>	<i>3</i>
TROUBLESHOOTINGS	3
CHARTS	3
OTHER.....	4

Prerequisites

- Windows 2000/XP/2003
- MSSQL 2000 Server, or MSDE
MSDE is a free database engine and it can be downloaded from Microsoft web site (<http://www.microsoft.com/sql/msde/downloads/download.asp>)
- Internet Information Server (IIS 5 or higher)
- .NET framework 1.1.
Can be downloaded from Microsoft web site
(http://msdn.microsoft.com/netframework/downloads/framework1_1/)

Installation

Installing MSDE

MSDE should be installed in Mixed Mode. Otherwise you will not be able to connect to database. Just follow the steps in installation wizard, specify 'sa' user with (or without) password.

Verify installation using osql utility. Open command line and try to connect to database

```
>osql -U sa -P
```

This means that you are connecting as 'sa' user and with blank password

If connection will be successful, you will see

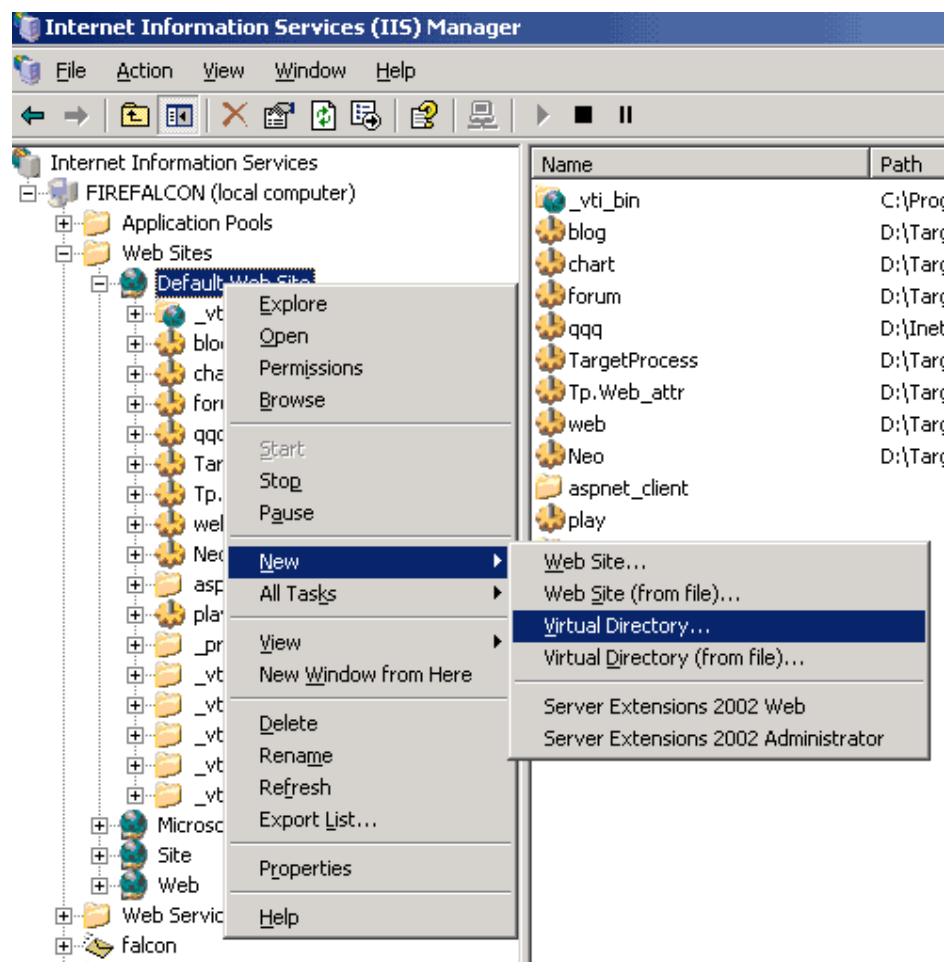
1>

Unpacking

Unpack **TargetProcess_Suite_xxx.zip** into any folder. In this guide we will assume that zip archive unpacked into *D:/TargetProcess* folder

Application's web site creation

1. Create new virtual folder or new web site in IIS. For example, <http://localhost/tp>



2. Copy all files from **D:/TargetProcess/www** directory into virtual folder's root directory

Database creation

1. Create new database. In the instructions below we will use tpDb database name.
2. Run tp.sql from D:/TargetProcess/sql folder to create tpDb structure. This script creates required tables and data.
3. Open Web.config and change the connection string in the following key:

```
<add key="ConnectionString" value="data source=(local);initial catalog=tpDb;uid=sa;pwd="></add>
```

Clarifications:

data source=(local)	IP or name of your Database server. Use (local) if you have DB Server installed on your PC
initial catalog=tpDb	Name of the Database
uid=sa	login into the database. Usually 'sa'
pwd=	password for the database. Usually empty for 'sa' user by default

Running

Open browser and type *http://localhost/tp/default.aspx* in the address field.

Login using admin/admin login and password

Troubleshootings

Charts

WebChart control created by Carlos <http://www.carlosag.net/>

The solution described below got from WebChart's readme.txt

“The way the chart works is rendering the charts into a folder called WebCharts, so, if the folder does not exist, it tries to create it, so it can store the charts there. One known issue is with Windows XP, and probably Win 2K3, that they do not grant write permission to the folders to the ASPNET account (or Network Service account).

So just to be sure, if the chart is working on the vs.net designer, but it is not working when seeing the actual page:

- 1) Under your application virtual directory create a folder named WebCharts
- 2) grant NTFS write permissions to the ASPNET account (be sure not to grant write permissions in the IIS MMC since that could be a security hole).

Try again.

So for example if your virtual directory is named MyApplication and lives in the default dirs.

You would need to create

C:\inetpub\wwwroot\MyApplication\WebCharts\

And assign read and write permissions to ASPNET account.

Other

Please, mail to **support@targetprocess.com** if any problems with installation.

Visit support forum at <http://support.targetprocess.com>

If you have any questions about TargetProcess:Planning, just contact us:

Email: info@targetprocess.com

Web: <http://www.targetprocess.com>