



*User's manual*

# Introduction

**MagicUAE Legacy** is an optimized configurations set for *WinUAE Amiga emulator* from Toni Willen (included in the package).

Every configurations have the closest display and behavior that the original models.

## Configurations list

### Classic Serie

- Amiga 500
- Amiga 500+
- Amiga 600
- Amiga 1000
- Amiga 1200
- Amiga 2000
- Amiga 3000 / 68881
- Amiga 3000 / 68882
- Amiga 3000T
- Amiga 4000
- Amiga 4000 EC
- Amiga 4000T
- Amiga 4000T / 060
- Amiga CD32
- Commodore CDTV

### Expanded Serie

- Amiga 500 – Extended 1Mb
- Amiga 1200 – Blizzard 1230 IV – 34Mb
- Amiga 4000T – GFX 256Mb – 130Mb
- AmigaOS 4.1 – Cyberstorm PPC 128Mb – GFX 512Mb – 392Mb
- Amiga CD32 – SX32 Pro – 34Mb

# Minimum Required

- Windows 7,10,11
- FullHD screen (1920x1080)
- Screen set with a 1080 vertical resolution
- 50hz screen and Direct3D 11 (only required for 50hz feature)
- Roms Kickstart (not included for copyrights)
- Double core processor for PPC Emulation

## List of required Roms Kickstart

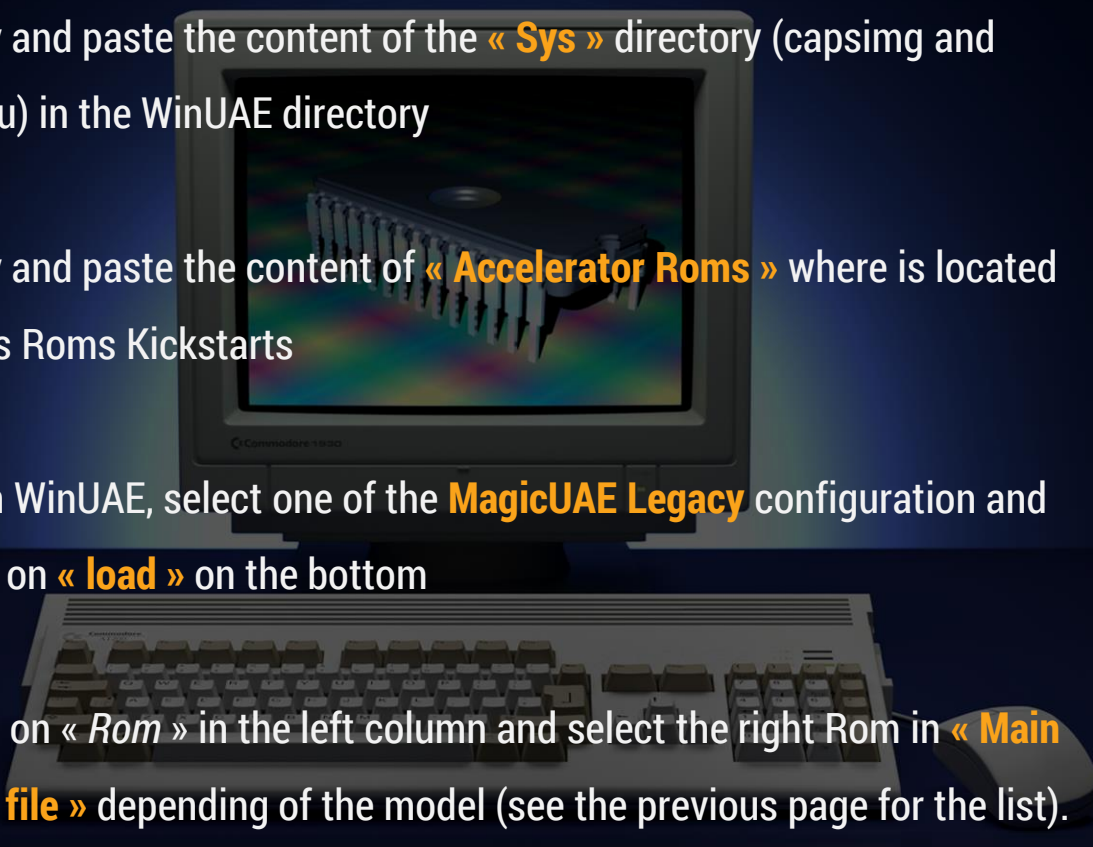
- **A1000** : 1.1 (Kickstart 31.34) or 1.2 (Kickstart 33.180)
- **A500 / A2000** : 1.3 (Kickstart 34.50)
- **CDTV** : 1.3 (Kickstart 34.50) + extended Rom + Flash Ram
- **A3000 / A3000T** : 2.0 (Kickstart 36.207)
- **A500+** : 2.04 (Kickstart 37.175)
- **A600** : 2.05 (Kickstart 37.299)
- **A1200** : 3.0 (Kickstart 39.106) or 3.1 (Kickstart 40.68)
- **A4000** : 3.0 (Kickstart 39.106)
- **CD32** : 3.1 (Kickstart 40.60) + extended Rom + Flash Ram
- **A4000T** : 3.1 (Kickstart 40.70)



*All Amiga can start with a superior Rom Kickstart.*

# Setup

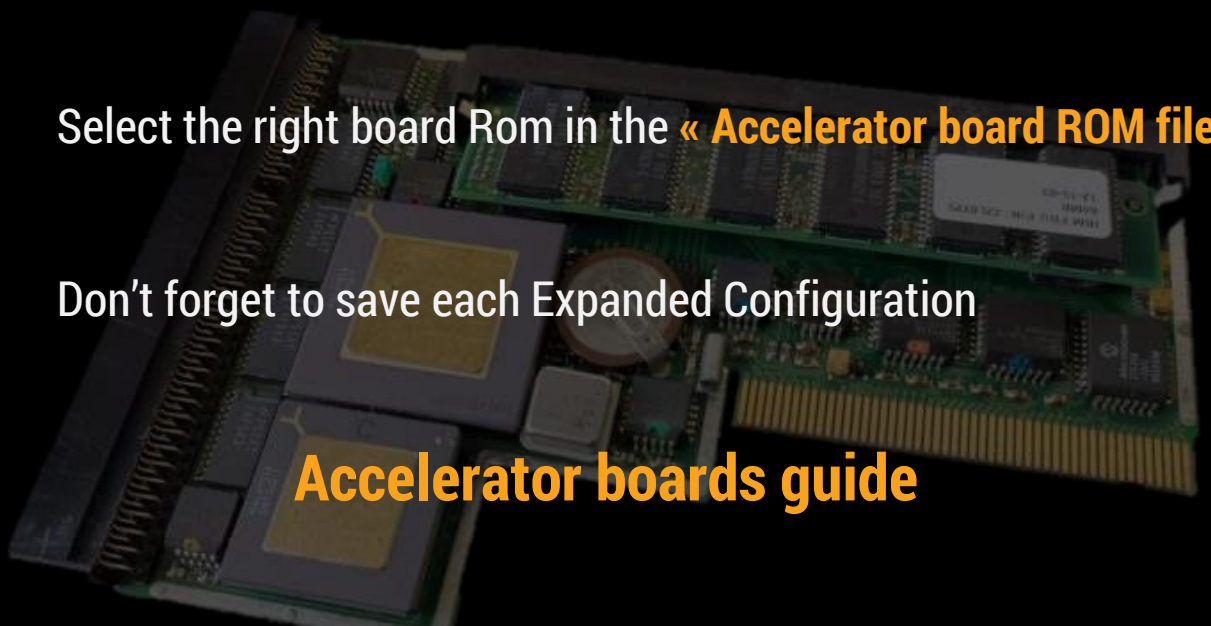
1. Install WinUAE located in the WinUAE directory by choosing the classic or 64bits release
  2. Copy and paste the « **MagicUAE Legacy** » directory in the *.../Winuae/Configurations/Hardware* directory in your hard disk
  3. Copy and paste the content of the « **Sys** » directory (capsimg and Qemu) in the WinUAE directory
  4. Copy and paste the content of « **Accelerator Roms** » where is located yours Roms Kickstarts
  5. Open WinUAE, select one of the **MagicUAE Legacy** configuration and click on « **load** » on the bottom
  6. Click on « **Rom** » in the left column and select the right Rom in « **Main Rom file** » depending of the model (see the previous page for the list).
- Picture 1 – Page 5*
7. For the CDTV and CD32, you have to add the « **Extended Rom file** » and the « **Flash Ram** »
  8. Repeat the same operation for each model and save them.



# Expanded Configurations

1. Load one of the Expanded Configurations and click on « **Expansions** » on the left
2. Select the right manufacturer and the range board in the « **Accelerator board settings** »
3. Select the right board Rom in the « **Accelerator board ROM file** »
4. Don't forget to save each Expanded Configuration

## Accelerator boards guide

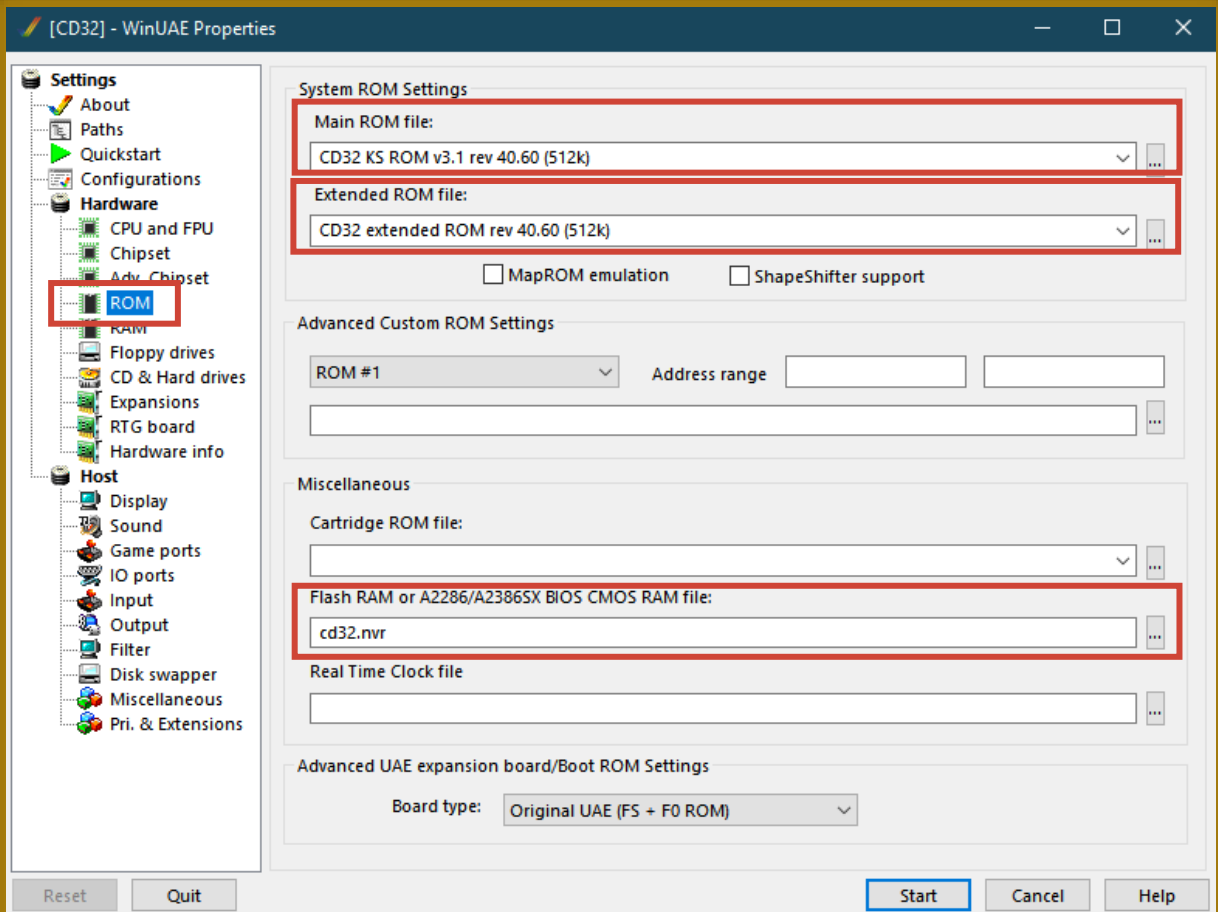


<b>A1200-030</b>	Phase 5 Blizzard / Blizzard 1230 IV / Blizzard 1230-IV
<b>A1200-060</b>	Phase 5 Blizzard / Blizzard 1260 / Blizzard 1240/1260
<b>A4000T-RTG</b>	Phase 5 Cyberstorm / Cyberstorm MKIII / Cyberstorm MKIII
<b>AMIGAOS 4.1</b>	Phase 5 Cybertsorm / Cyberstorm PPC / Cyberstorm PPC



***AmigaOS 4.1 needs a very powerfull computer.***

# Additional Guide



Picture 1

**Main ROM file** : Select the Rom Kickstart for each model

**Extended ROM file** : Select the Extended Rom file only for the CDTV or CD32

**Flash RAM** : Select the Flash Ram File only for the CDTV or CD32



# Additional Features

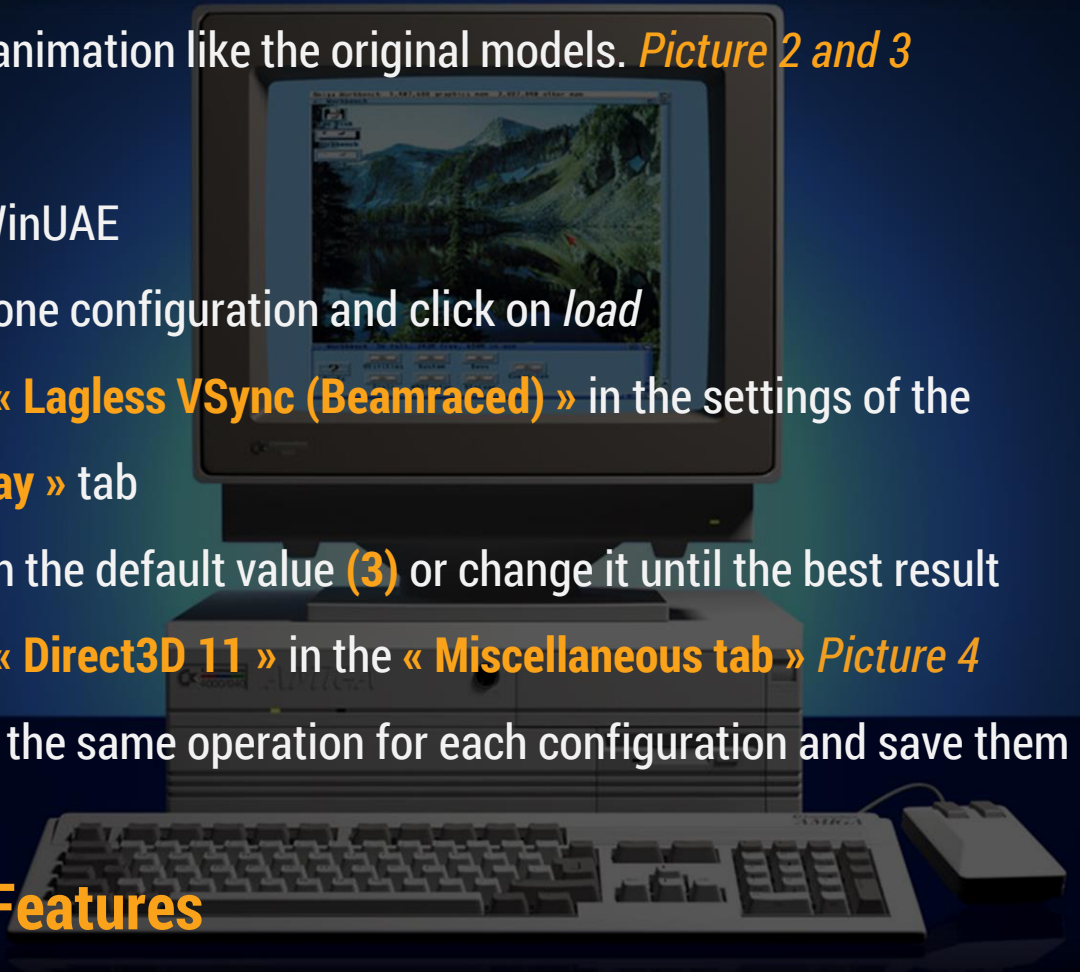
## 50hz Lagless

If you own a 50hz screen, you can use the lagless feature for to have a smooth animation like the original models. *Picture 2 and 3*

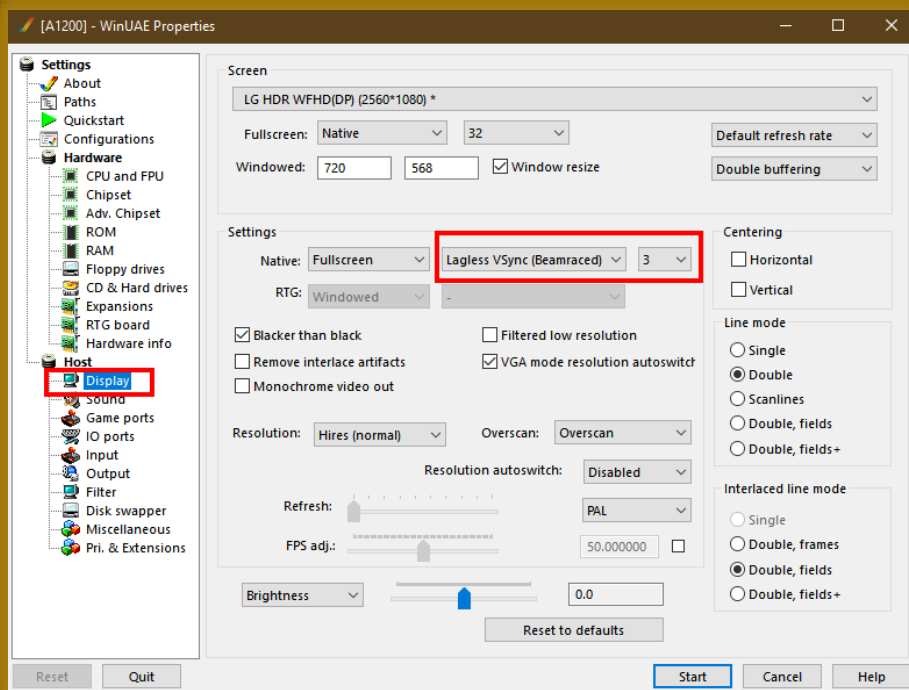
- Open WinUAE
- Select one configuration and click on *load*
- Select « **Lagless VSync (Beamraced)** » in the settings of the « **Display** » tab
- Try with the default value **(3)** or change it until the best result
- Select « **Direct3D 11** » in the « **Miscellaneous tab** » *Picture 4*
- Repeat the same operation for each configuration and save them

## Others Features

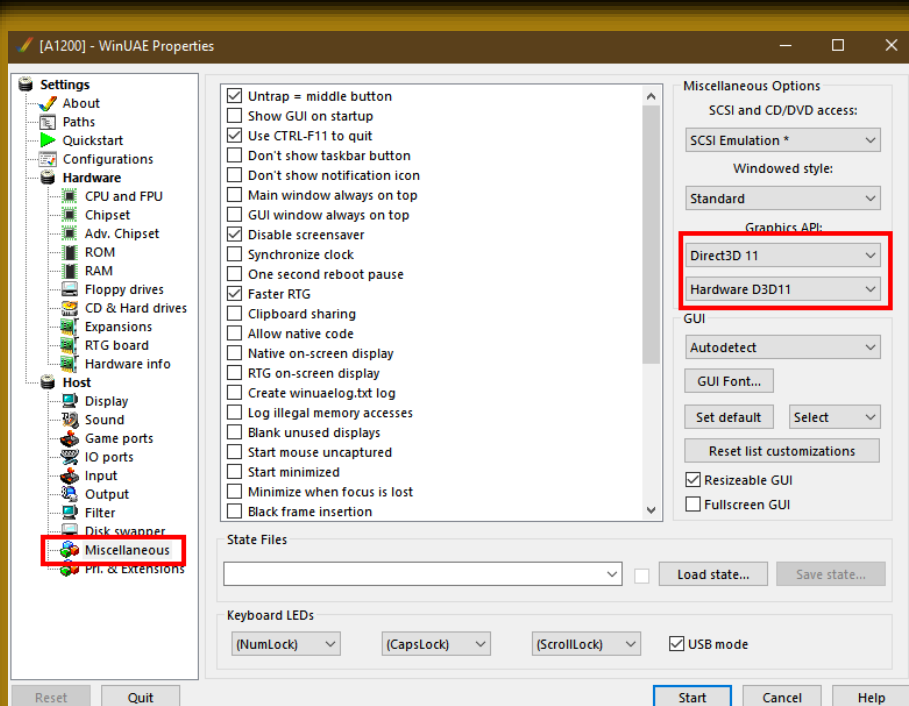
- Start immediately the emulation by double click on the configuration icon file
- Quit the emulation by pressing **[CTRL] + [F11]**
- Open WinUAE during emulation by pressing **[F12]**



# Additional Features



Picture 2



Picture 3



# Support

A support section is available for **free**  
in our official forum

**[intensecreative.forumotion.com](https://intensecreative.forumotion.com)**



**intense**  
**Amiga**



# EXTEND YOUR **AMIGA** PASSION

SUBLIMATE YOUR COLLECTION WITH **190** LABELS

AMIGA ECS - AGA - CDTV - CD32

## STICKERSRENEW FINAL ASSAULT

18  
REMASTERED  
MUSICS



NEW  
JAMES POND  
PACK



Join us

[intensecreative.forumotion.com](http://intensecreative.forumotion.com)

© 2023 Intense Creative.

Amiga and the Amiga logo are registered trademarks of Amiga Corp.

**intense**  
creative

[intensecreative.forumotion.com](http://intensecreative.forumotion.com)

ONLY ONE MACHINE

ONLY ONE MONITOR

# Magical

CURVATURE  
AND  
SHADOW  
EFFECTS

## OVERLAYS

SPECIAL  
**CD<sup>32</sup>**  
OVERLAY



**4** REALISTICS **1084S** OVERLAYS IN **HD** AND **4K**

[intensecreative.forumotion.com](http://intensecreative.forumotion.com)

© 2023 Intense Creative.

CD32 logo is a registered trademark of Amiga Inc.

Commodore and the Commodore logo are registered trademarks of Commodore Business Machines Ltd.



Join us

**intense**  
creative

REGISTER NOW

SUBSCRIBE NOW AND BE NOTIFIED  
WHEN A **NEW PRODUCT** IS AVAILABLE



[intensecreative.forumotion.com](http://intensecreative.forumotion.com)



*Join us*